

Nvee Pro II



User Manual

Safety advice

This product is not recommended for use by:

- Young people under the age of 18 years
- Non-smokers
- Pregnant or breastfeeding women
- Persons with general ill health such as high blood pressure, cardiovascular conditions, diabetes, asthma, lung disease, hyperthyroidism, liver or kidney problems, stomach or intestinal ulcers or tumours of the adrenal glands
- Persons who have a sensitivity/allergy to nicotine or any of the other e-liquid ingredients.

Possible adverse effects

Immediately stop use of this product and seek medical advice if you experience any of the following:

- Feeling faint
- Nausea or vomiting
- Headache
- Dizziness
- Stomach discomfort
- Coughing or irritation to the mouth/throat
- Nasal congestion
- Chest palpitations/development of an irregular heartbeat
- Allergic reaction such as rash, itching or swelling
- Any other unusual or adverse effect.

If medical advice is needed, have product container and label to hand.

Caution

Do not swallow any e-liquid substances. Nicotine is a toxic substance when inhaled, ingested or in contact with skin. If contact with skin is made, wash immediately. Nicotine warning applies when the product is used as designed and filled with nicotine-containing e-liquid. Keep out of reach of children. Please dispose of this product responsibly by following your local authority electronic waste disposal guidelines. Using with incompatible parts, e-liquids and accessories may cause overheating and/or injury.

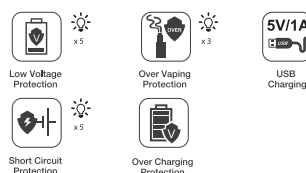
Looking after your device

Store in a cool, dry place. Do not leave, charge or store the device in damp environments, in direct sunlight or in extreme temperatures. Never submerge any of the kit in water or any other liquid. Do not use the device when temperatures are outside the range -10-60 °C or 50-140 °F. Do not attempt to repair the product yourself as damage or personal injury may occur. Do not use this product or its parts for any purpose other than vaping. Do not use parts that are damaged or cracked. Do not use with incompatible parts, e-liquids or accessories; this can affect product performance and safety. Avoid carrying in pockets or bags with other metal objects such as keys and coins. Don't place the battery near flammable items such as carpets, curtains, etc., whilst charging. Don't leave device on charge overnight or unattended whilst charging. If the device becomes hot or emits a strange smell during charging, remove it from charge immediately and do not attempt to use it again.

Some useful tips

Ready for use with high vg e-liquids. Each time you replace the coil, you should vape a few times to ensure the coil is conditioned and the e-liquid flavour comes through.

Also compatible with same coil of different resistances for either sub ohm or mouth to lung vaping, ideal for new users or experienced vapers.



Specification

MOD

1500mAh Li-Ion	20,3*27,0*68,9mm
10W, 20W, 30W (L,M,H)	≤2.0hrs
Black	

TANK

2.0ml (Max)	Ø 18,5*56,9mm
0.7Ω Kanthal coil	Black



How to use your kit

Power On/Off

Press Fire button 5 times in 2 seconds.

Vaping

Open the airflow controller, adjusting to your preference. Press and hold the Fire button to vape. Close the airflow controller and press the Fire button 5 times in 2 seconds when not vaping. Close the airflow controller when not in use.

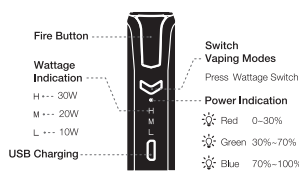
To select the next wattage setting

Press the button underneath the Fire button once to change the wattage between low, medium and high setting.

Charging the kit

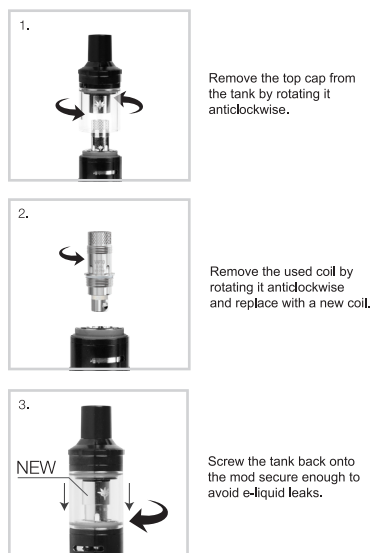
The device light will flash red when it needs to be charged. The battery will last for 30 minutes (max) before it is fully switched off. Remove the device from the charger cable to use your vape kit.

- When the LED light flashes blue with 'H' underneath after releasing the Fire button, the battery has between 70-100% charge.
- When the LED light flashes green with 'M' underneath after releasing the Fire button, the battery has between 30-70% charge.
- When the LED light flashes red with 'L' underneath after releasing the Fire button, the battery has between 0-30% charge.



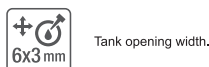
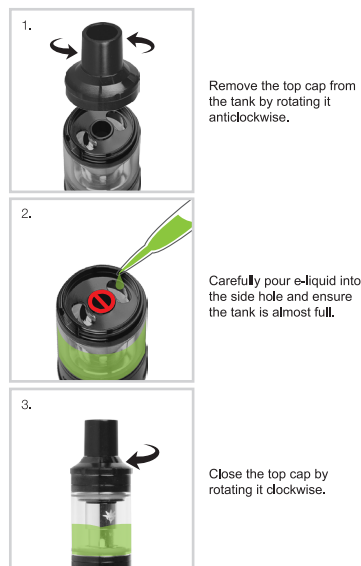
Plug the USB cable into a power supply and into the USB port to charge.

How to change the coil

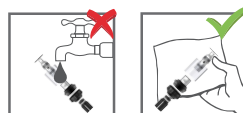


The coils should be changed regularly in line with frequency of use or if you notice a deterioration in taste/quality of the vapour from your device. The coil is designed for use with high vg e-liquids.

How to fill with e-liquid



Cleaning the kit



Nvee Pro II

nvee.co.uk

For all product queries and any returns, please call Customer Services on +44 (0) 1827 307777.

Distributed by
Galaxy Connect Ltd. Unit 7 Apollo Park,
Apollo, Lichfield Road Ind. Est.
Tamworth B79 7TA



Designed by Vaprio
Made in China